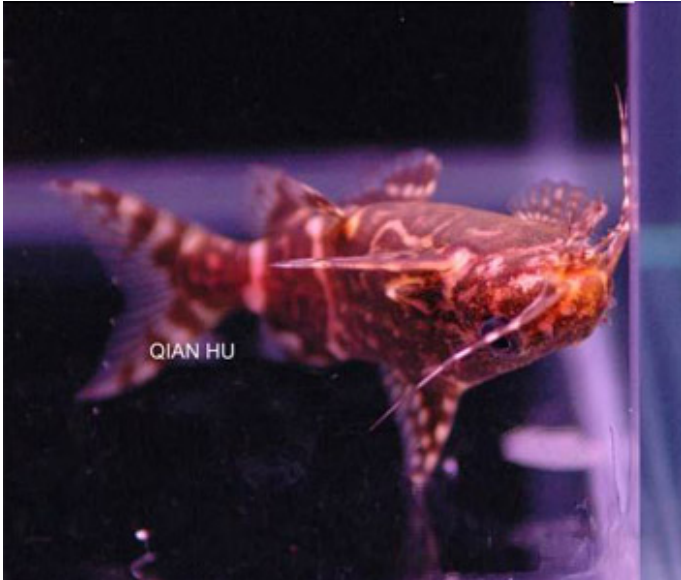




UPSIDE DOWN CATFISH

Synodontis nigriventris



An interesting oddball which mostly swims upside-down! Feels more secure if it has some hiding places such as plant thickets or driftwood. Prefers to swim in mid-water rather than near the substrate. Best kept in small groups with other peaceful types.

Disclaimer: The information provided here is of a general nature only. There are site specific factors that are not addressed here that may also affect the health and well being of your fish, as such Coburg Aquarium will not be held liable for the performance of your fish.

Copyright © 2026 Coburg Aquarium

KEEPING SNAPSHOT

Difficulty: intermediate
Max Growth Size: 8-9 cm
Temperament: Peaceful, community fish

PREFERRED WATER PARAMETERS

Temperature: 22-26 degrees celsius
pH Level: 6.5-7.5
General Hardness: Soft - Moderate

RANGE

Africa: Congo River system

REPRODUCTION

Egg scatterer, usually can only be stimulated to breed by hormone injection.

FEEDING

Omnivorous and Herbivorous, prefers sinking foods.

ADDITIONAL COMMENTS



03 9354 5843



03 9354 9371



info@coburgaquarium.com.au



coburgaquarium.com.au